

KEY

— PROPOSED PARKING
MONDAY-SATURDAY 08.00-18.00
1hr NO RETURN 1hr

— EXISTING WAITING, LOADING
AND PARKING RESTRICTIONS
(WITH OR WITHOUT SYMBOLS)



Notes

Rev.	Description	Drwn	Sig.	Date	Chkd	Sig.	Date	Appr	Sig.	Date
A	RESTRICTIONS AMENDED	CAH	CAH	06.14	RH	RH	06.14	RH	RH	06.14

North Point

Based upon the Ordnance Survey mapping with the permission of the Controller of Her Majesty's Stationery Office. © Crown copyright. Unauthorised reproduction infringes Crown copyright and may lead to prosecution or civil proceedings. Surrey County Council LA 078572 1998.

Drawn by	CAH	Sig.	CAH	Date	06.14
Checked by	RH	Sig.	RH	Date	06.14
Approved by	RH	Sig.	RH	Date	06.14

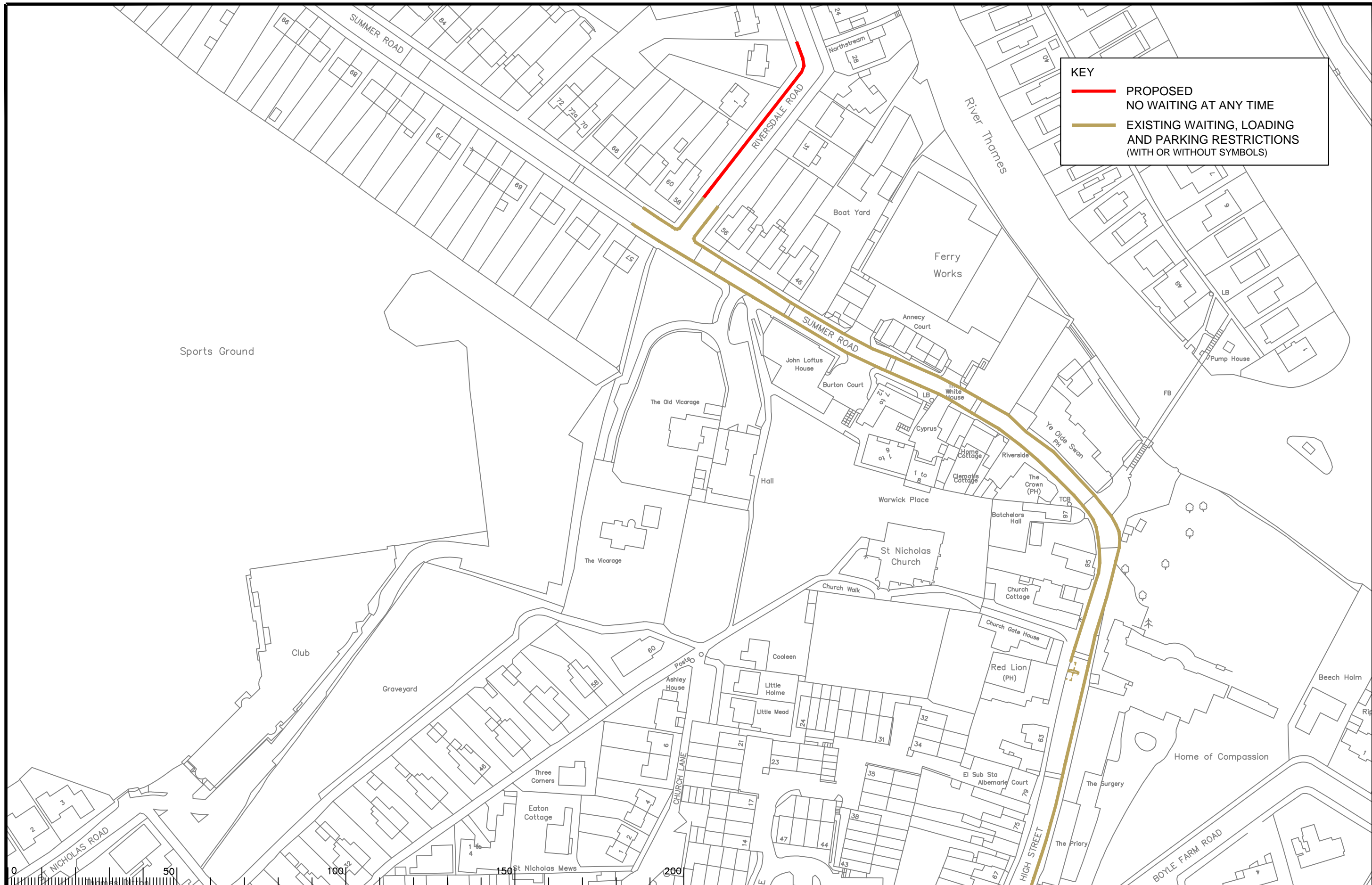
Project

ELMBRIDGE DPE
THAMES DITTON AND LONG DITTON

Implemented Traffic Orders

SHEET OF

Project No. 3282/ELM
Contract Sheet No. 1315
Drawing No. A
Rev. A
Classification PROPOSAL



KEY

- PROPOSED NO WAITING AT ANY TIME
- EXISTING WAITING, LOADING AND PARKING RESTRICTIONS (WITH OR WITHOUT SYMBOLS)

Notes

Rev.	Description	Drwn	Sig.	Date	Chkd	Sig.	Date	Appr	Sig.	Date
A	RESTRICTIONS AMENDED	CAH	CAH	02.11	AH	AH	02.11	TPC	TPC	02.11

North Point

Based upon the Ordnance Survey mapping with the permission of the Controller of Her Majesty's Stationery Office. © Crown copyright. Unauthorised reproduction infringes Crown copyright and may lead to prosecution or civil proceedings. Surrey County Council LA 078572 1998.

Drawn by	CAH	Sig.	CAH	Date	06.14
Checked by	RH	Sig.	RH	Date	06.14
Approved by	RH	Sig.	RH	Date	06.14

Project

**ELMBRIDGE DPE
THAMES DITTON AND LONG DITTON**

IMPLEMENTED TRAFFIC ORDERS

SHEET OF

SURREY COUNTY COUNCIL

Project No.	3282/ELM
Contract Sheet No.	1314
Drawing No.	A
Rev.	A
Classification	PROPOSAL